

- NOTES:
- 1.PRIMARY: 16 1/2 TURN 1UEW-0.45;
 - 2.SECONDARY: 2800 TURN 1UEW-0.06;
 - 3.HYPOT 1250VAC. BETWEEN PRIMARY AND SECONDARY;
 - 4.MAXIMUM OPERATING AMBIENT 85 ° C;
 - 5.FILL MATERIAL: EPOXY, VACUUM FORMED;
 - 6.PEAK PRIMARY CURRENT: 60 AMPS;
 - 7.ADDITIONAL ELECTRICAL SPEC'S.(FOR REF.ONLY)
 PRIMARY: 0.17 OHMS ± 10%, 9.0uH ± 10%;
 SECONDARY: 1100 HMS ± 10%, 170 mH ± 10%;
 MEASURED AT 1KHz, 75 ° F

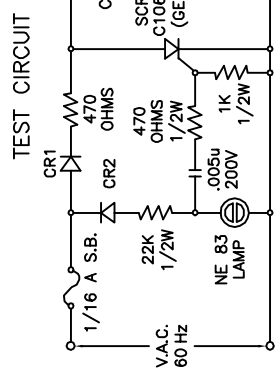


FIG. 1

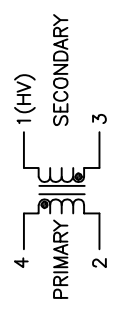


FIG. 2

PRODUCT	Material NO	NAME	DST2010-153
MATERIAL THICKNESS	UNIT	DRAWING NO.	
FINISH	2011.03.05	PAGE	1
APPROVE	CHECK	VERSIONS	1.0
DATE	REVISE	DESIGN	
			GEI Inc.