

DST2010-004B — OUR PART NO.
20100712 — Manufacture lot No.

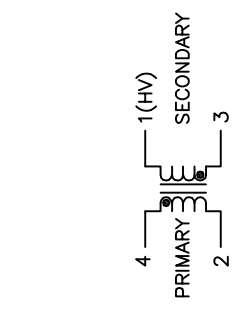


FIG. 2

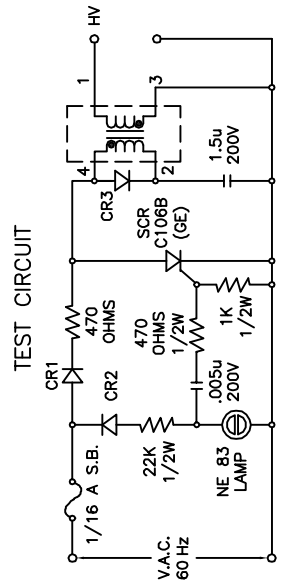


FIG. 1

- NOTES:
1. PRIMARY: 10 1/2 TURN 1UEW-0.95;
 2. SECONDARY: 3600 TURN 1UEW-0.06;
 3. HYPOT 1250VAC. BETWEEN PRIMARY AND SECONDARY;
 4. MAXIMUM OPERATING AMBIENT 85 ° C;
 5. FILL MATERIAL: EPOXY, VACUUM FORMED;
 6. PEAK PRIMARY CURRENT: 60 AMPS;
 7. ADDITIONAL ELECTRICAL SPEC'S. (FOR REF. ONLY)
 PRIMARY: 0.015 OHMS ± 20%, 3.7uH ± 15%;
 SECONDARY: 1100 HMS ± 20%, 450 mH ± 15%;
 MEASURED AT 1KHZ, 75 ° F

PRODUCT	Material NO	NAME	DST2010-004B
MATERIAL THICKNESS	UNIT	DRAWING NO.	
FINISH	2011.03.05	PAGE	1
APPROVE	CHECK	VERSIONS	1.0
DATE	REVISION	DESIGN	
			GEI Inc.