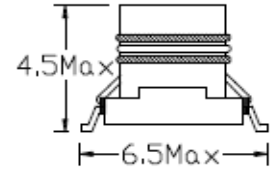
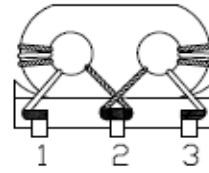
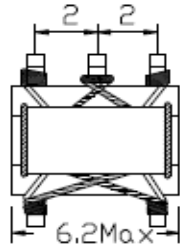


EXTERNAL DIMENSIONS (Unit:m/m)



| Part Number | Winding Turns | Operating Frequency Range (MHz) | Insertion Loss (dB) | PIN Connection |
|------------------------------|---------------|---------------------------------|---|----------------|
| Double Balanced Mixer | | | | |
| SB0605T-1003 | 3*4 | 8 ~800 | 3.5 | 1 |
| SB0605T-1005 | 2*4 | 400 ~1.3GHz | 4.0 | 1 |
| SB0605T-1008 | 4*4 | 6 ~600 | 2.5 | 1 |
| SB0605T-1011 | 5*4 | 5 ~500 | 2.0 | 1 |
| SB0605T-1012 | 1*4 | 50 ~400 | 10.0 | 1 |
| SB0605T-1013 | 2*4 | 10 ~1.0GHz | 6.0 | 1 |
| Frequency Mixer | | | | |
| SB0605T-1024 | 3*2 3 | 50 ~400 | 3.0 | 2 |
| SB0605T-1052 | 2*2 2 | 9 ~350 | 3.0 | 2 |
| SB0605T-1085 | 1*2 1 | ----- | 3.0 | 2 |
| SB0605T-1086 | 4*2 4 | 2.2 ~400 | 3.0 | 2 |
| SB0605T-1087 | 5*2 5 | 1.5 ~300 | 3.0 | 2 |
| Distributor | | | | |
| SB0605T-1014 | ----- | 20 ~600 | IN to OUT-1,2. 4.5Max OUT-1 to OUT- 2. 10.0Min | 3 |
| Directional Coupler | | | | |
| SB0605T-1006 | 5 | 6 ~600 | IN to OUT-1 0.9Max IN to OUT- 2 13~16 | 4 |
| SB0605T-1007 | 6 | 6 ~600 | IN to OUT-1 0.8Max IN to OUT- 2 15~17 | 4 |
| SB0605T-1015 | 4 | 6 ~600 | IN to OUT-1 1.3Max IN to OUT- 2 11~14 | 4 |

Features:

Pair wire coil for high stability.

Base PIN terminal treated, allowing mounting as is on a PCB.

Applications:

Double balance mixer, broad-band transformers, impedance transformers, etc.

Pin Connection:

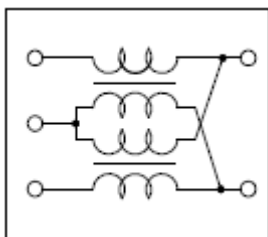


Fig:1

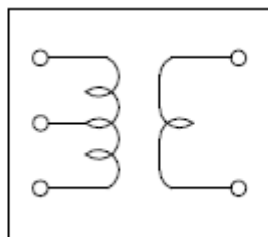


Fig:2

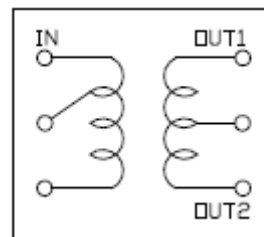


Fig:3

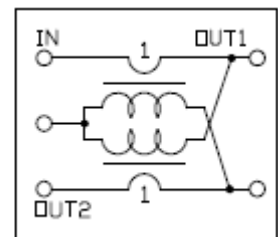


Fig:4