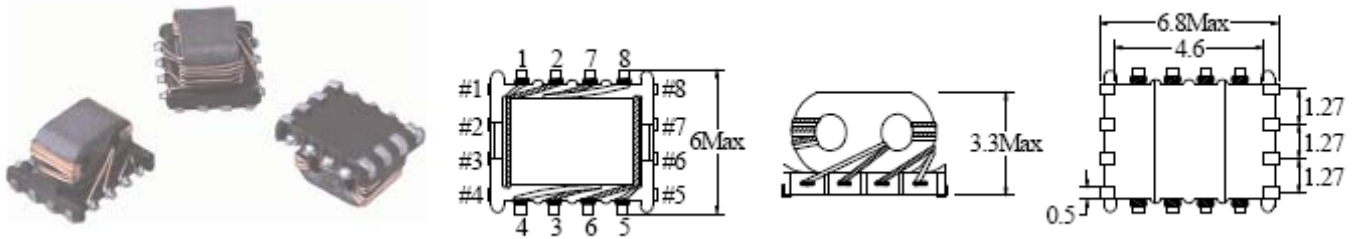


EXTERNAL DIMENSIONS (Unit:m/m)



Part Number	Insertion Loss(HP-8714C)			
	50MHz	100MHz	300MHz	500MHz
SB0603T-01				
SB0603T-02	2.8dB±2.0dB	7.3dB±2.5dB	12.0dB±3.0dB	14.0dB±3.0Db
SB0603T-03				

Part Number	I DC (Max)	R DC (Max)	Impedance	Rated	Wisting	Insulation
			Common mode (HP-4291B)	Voltage	Voltage (CH-901)	Resistance (CH-702A)
SB0603T-01	0.65A	0.30Ω	112 Ω @ 100MHz 176 Ω @ 400MHz			
SB0603T-02	0.65A	0.30Ω	220 Ω @ 100MHz 420 Ω @ 400MHz		DC 50V	
SB0603T-03	0.65A	0.30Ω	380 Ω @ 100MHz 750 Ω @ 400MHz			

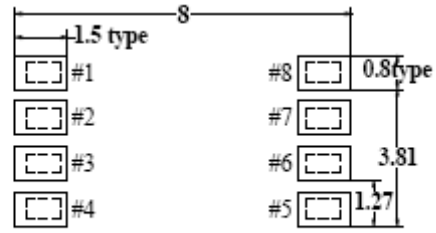
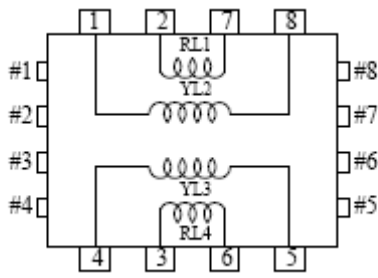
Features:

- Low profile: 3.3mm(Max).
- Common mode impedance of 112~380Ω at 100MHz ,176~750Ω at 400MHz.
- Operating temperature Range: -25°C ~ +85°C.
- Suitable for reflow soldering.

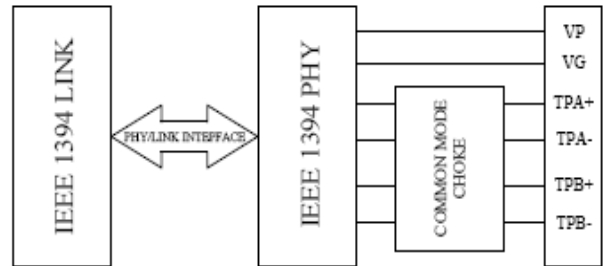
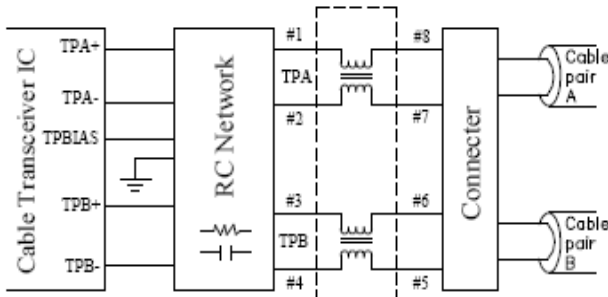
Applications:

SB0603 Series is a dual wound common mode choke w/c is ideal for NOISE ATTENUATION in a twisted pair cable interfaces as well as IEEE1394 & USB2.0 applications. An excellent impedance balance between two sets of twisted pairs is achieved by winding across a single core .
 One SB0603 common mode choke coil per interface port is possible with this dual winding configurations.

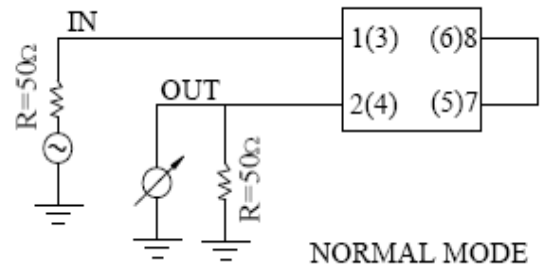
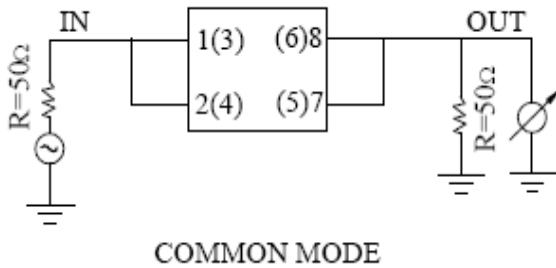
Circuit(Top View)&PAD:



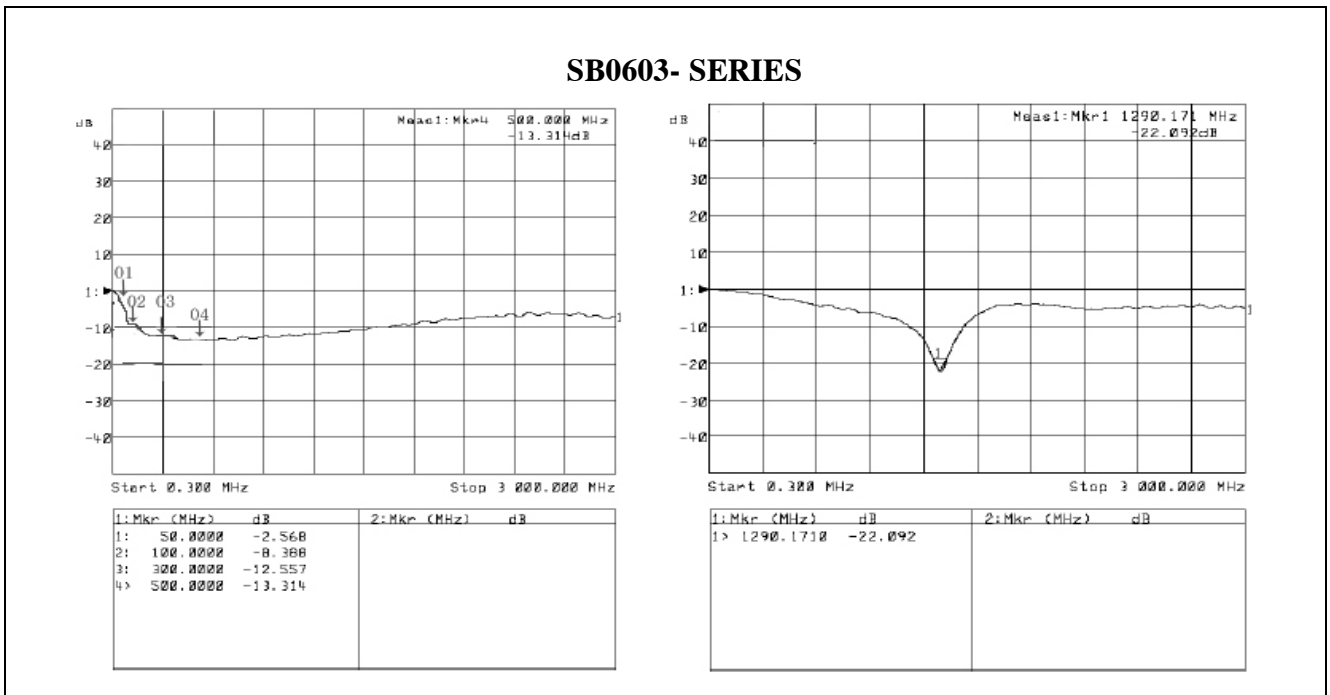
Twisted Cable Interface&IEEE 1394 Port:



Test Mode:



Insertion Loss:



|Z|-F:

