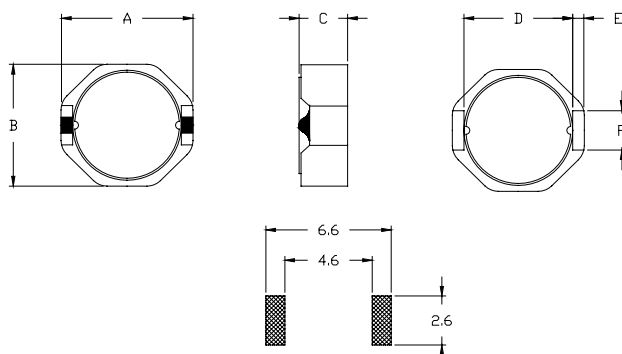
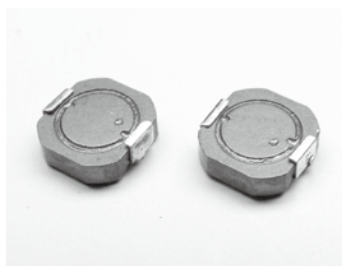


HTD62L TYPE

TYPE

HTD 62L



A: 6.7 MAX
 B: 6.2 MAX
 C: 2.0 MAX
 D: 4.8 REF
 E: 0.6 REF
 F: 2.0 REF

SPECIFICATION

ITEM	L	DCR	DCR	IDC
HTD62L	(μ H)	TYP.(m Ω)	MAX.(m Ω)	MAX.(A)
1R0M	1.0 \pm 20%	14	16	3.50
1R5M	1.5 \pm 20%	17	21	2.94
2R0M	2.0 \pm 20%	24	28	2.47
3R3M	3.3 \pm 20%	39	47	1.99
4R7M	4.7 \pm 20%	55	65	1.59
6R2M	6.2 \pm 20%	62	74	1.49
8R2M	8.2 \pm 20%	85	102	1.25
100M	10 \pm 20%	98	118	1.22
120M	12 \pm 20%	128	153	0.99
150M	15 \pm 20%	149	179	0.94
180M	18 \pm 20%	172	207	0.83
220M	22 \pm 20%	211	253	0.80
270M	27 \pm 20%	275	330	0.65
330M	33 \pm 20%	306	368	0.63
390M	39 \pm 20%	394	473	0.55
470M	47 \pm 20%	452	542	0.50

M: \pm 20%

can design any part to your requirements with different inductance.

* All parameters as this content presented are subject to final specifications both sides confirmed.