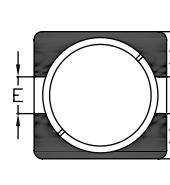
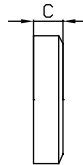
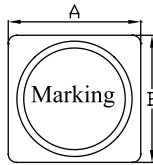
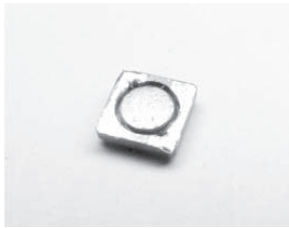


HSDI4818 TYPE

TYPE

DIMENSION

HSDI4818



A: 4.8 ± 3.0
 B: 4.8 ± 3.0
 C: 1.8 ± 0.2
 D: 1.6 REF
 E: 1.6 REF

SPECIFICATION

Item	Inductance (μH)	Tolerance (%)	Isat max (A)	DCR max ($\text{m}\Omega$)	SRF typ. (MHz)
HSDI48181R0N	1.0	± 30	2.60	30	90
HSDI48181R8N	1.8	± 30	2.10	41	90
HSDI48182R7N	2.7	± 30	1.55	54	65
HSDI48183R3N	3.3	± 30	1.55	60	50
HSDI48184R7N	4.7	± 30	1.65	82	45
HSDI48185R6N	5.6	± 30	1.35	90	48
HSDI48186R8N	6.8	± 30	1.10	100	40
HSDI4818100N	10	± 30	1.00	150	28
HSDI4818150N	15	± 30	0.70	220	28
HSDI4818180N	18	± 30	0.70	280	20
HSDI4818220N	22	± 30	0.60	300	16
HSDI4818330N	33	± 30	0.50	420	19
HSDI4818101N	100	± 30	0.30	13500	7

N: $\pm 30\%$

can design any part to your requirements with different inductance.

* All parameters as this content presented are subject to final specifications both sides confirmed.