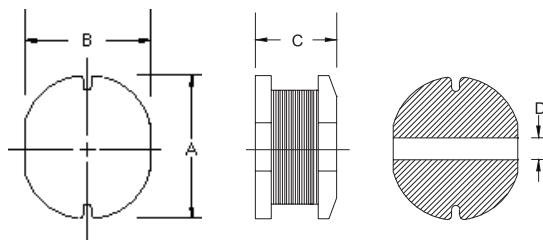


## HPC1005 TYPE

### TYPE

### DIMENSION

HPC 1005: 10μH ~ 820μH



A : 10.0±0.3  
 B : 9.0±0.3  
 C : 5.4±0.4  
 D : 2.1 REF

### SPECIFICATION

ITEM	L	DCR	IDC
HPC1005	(μH)	MAX. (Ω)	MAX. (A)
100M	10±20%	0.06	2.60
120M	12±20%	0.07	2.45
150M	15±20%	0.08	2.27
180M	18±20%	0.09	2.15
220M	22±20%	0.10	1.95
270M	27±20%	0.11	1.76
330M	33±20%	0.12	1.50
390M	39±20%	0.14	1.37
470K	47±10%	0.17	1.28
560K	56±10%	0.19	1.17
680K	68±10%	0.22	1.11
820K	82±10%	0.25	1.00
101K	100±10%	0.35	0.97
121K	120±10%	0.40	0.89
151K	150±10%	0.47	0.78
181K	180±10%	0.63	0.72
221K	220±10%	0.73	0.66
271K	270±10%	0.97	0.57
331K	330±10%	1.15	0.52
391K	390±10%	1.30	0.48
471K	470±10%	1.48	0.42
561K	560±10%	1.90	0.33
681K	680±10%	2.25	0.28
821K	820±10%	2.25	0.24
102K	1000±10%	2.50	0.22

K: ±10% M: ±20%

can design any part to your requirements with different inductance.

\* All parameters as this content presented are subject to final specifications both sides confirmed.