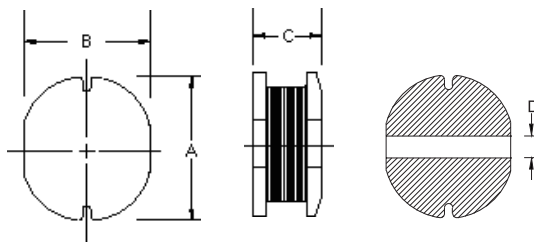


HPC1004 TYPE

TYPE

DIMENSION

HPC 1004: 10 μ H ~ 560 μ H



A : 10.0 \pm 0.3
 B : 9.0 \pm 0.3
 C : 4.0 \pm 0.5
 D : 2.1 REF

SPECIFICATION

| ITEM | L | DCR | IDC |
|---------|---------------|-------------------|----------|
| HPC1004 | (μ H) | MAX. (Ω) | MAX. (A) |
| 100M | 10 \pm 20% | 0.05 | 2.38 |
| 120M | 12 \pm 20% | 0.06 | 2.13 |
| 150M | 15 \pm 20% | 0.07 | 1.87 |
| 180M | 18 \pm 20% | 0.08 | 1.73 |
| 220M | 22 \pm 20% | 0.09 | 1.60 |
| 270M | 27 \pm 20% | 0.10 | 1.44 |
| 330M | 33 \pm 20% | 0.12 | 1.26 |
| 390M | 39 \pm 20% | 0.15 | 1.20 |
| 470M | 47 \pm 20% | 0.17 | 1.10 |
| 560K | 56 \pm 10% | 0.20 | 1.01 |
| 680K | 68 \pm 10% | 0.22 | 0.91 |
| 820K | 82 \pm 10% | 0.25 | 0.85 |
| 101K | 100 \pm 10% | 0.34 | 0.74 |
| 121K | 120 \pm 10% | 0.40 | 0.69 |
| 151K | 150 \pm 10% | 0.54 | 0.61 |
| 181K | 180 \pm 10% | 0.62 | 0.56 |
| 221K | 220 \pm 10% | 0.72 | 0.53 |
| 271K | 270 \pm 10% | 0.95 | 0.45 |
| 331K | 330 \pm 10% | 1.10 | 0.42 |
| 391K | 390 \pm 10% | 1.24 | 0.38 |
| 471K | 470 \pm 10% | 1.53 | 0.35 |
| 561K | 560 \pm 10% | 1.90 | 0.32 |

K: \pm 10% M: \pm 20%

can design any part to your requirements with different inductance.

* All parameters as this content presented are subject to final specifications both sides confirmed.