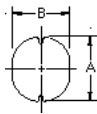


## HPC0302 TYPE

### TYPE

### DIMENSION

HPC 0302: 1.5 $\mu$ H ~ 150 $\mu$ H



A: 3.5 $\pm$ 0.3  
 B: 3.1 $\pm$ 0.3  
 C: 2.1 $\pm$ 0.3  
 D: 1.2 $\pm$ 0.3

### SPECIFICATION

ITEM	L	DCR	IDC
HPC0302	( $\mu$ H)	MAX. ( $\Omega$ )	MAX. (A)
1R5M	1.5 $\pm$ 20%	0.06	2.00
2R2M	2.2 $\pm$ 20%	0.09	1.60
3R3M	3.3 $\pm$ 20%	0.10	1.50
4R7M	4.7 $\pm$ 20%	0.20	1.40
6R8M	6.8 $\pm$ 20%	0.30	1.00
8R2M	8.2 $\pm$ 20%	0.32	1.00
100M	10 $\pm$ 20%	0.35	1.00
120M	12 $\pm$ 20%	0.40	0.90
150M	15 $\pm$ 20%	0.60	0.60
180M	18 $\pm$ 20%	0.70	0.60
220M	22 $\pm$ 20%	1.00	0.50
270M	27 $\pm$ 20%	1.10	0.45
330M	33 $\pm$ 20%	1.30	0.40
390M	39 $\pm$ 20%	1.50	0.35
470M	47 $\pm$ 20%	2.00	0.35
680M	68 $\pm$ 20%	2.20	0.30
820M	82 $\pm$ 20%	2.80	0.25
101M	100 $\pm$ 20%	3.20	0.20
121M	120 $\pm$ 20%	4.00	0.18
151M	150 $\pm$ 20%	4.30	0.15

M:  $\pm$ 20%

can design any part to your requirements with different inductance.

\* All parameters as this content presented are subject to final specifications both sides confirmed.