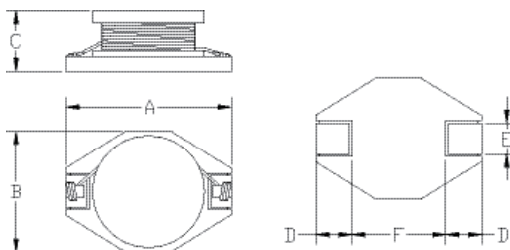


## HCP191507 TYPE

### TYPE

#### HCP 191507



A: 18.54 MAX  
 B: 15.24 MAX  
 C: 7.11 MAX  
 D: 2.54  
 E: 2.54  
 F: 12.7

### SPECIFICATION

ITEM	L	DCR	IDC1	IDC2
HCP191507	( $\mu$ H)	MAX( $\Omega$ )	MAX.(A)	MAX.(A)
1R0M	1.0	0.009	20	8.6
2R2M	2.2	0.014	16	7.1
3R3M	3.3	0.018	14	6.2
5R6M	6.8	0.020	12	5.3
100M	10	0.031	10	4.3
150M	15	0.036	8	4.0
220M	22	0.047	7	3.5
330M	33	0.066	5.5	3.0
470M	47	0.086	4.5	2.6
680M	68	0.13	3.5	2.3
101M	100	0.19	3.0	1.8
151M	150	0.25	2.6	1.5
221M	220	0.38	2.4	1.2
331M	330	0.56	1.9	1.0
471M	470	0.85	1.4	0.82
681M	680	1.10	1.2	0.72
102M	1000	1.80	1.0	0.56

M:  $\pm$ 20%

can design any part to your requirements with different inductance.

\* All parameters as this content presented are subject to final specifications both sides confirmed.